



**NORTHUMBRIA  
POLICE**

# CUMULATIVE IMPACT ASSESSMENT - NORTH TYNESIDE

Park View and North Shields Fish Quay

Update (June 2021 to December 2021)

*Author; CV 4294  
Turner*

### Park View.



### All recorded crime within the Park View:

Year	Total Number of Crimes	Percentage of Crime in Whitley Bay	Monthly Avg
2018	29	0.7%	2.4
2019	28	0.7%	2.3
June 2021 – December 2021	18	0.8%	2.6

### Crime levels for Park View by day of the week

	2018	2019	2021
Monday	9	2	2
Tuesday	1	3	3
Wednesday	5	3	5
Thursday	3	7	5
Friday	4	4	0
Saturday	5	4	1
Sunday	2	5	2

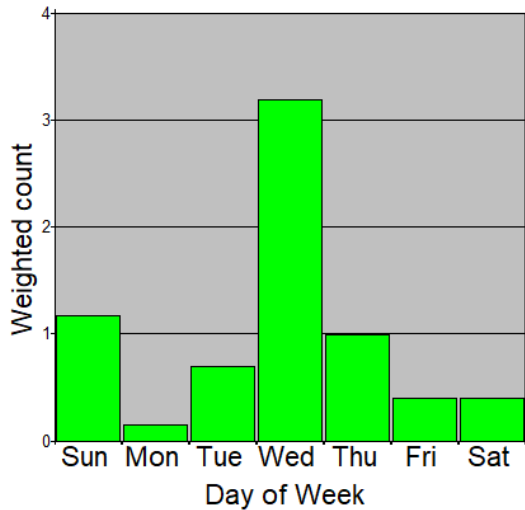
Peak day analysis in **2018**, do not show any distinct pattern with Monday recording the highest levels, and Wednesday and Saturdays recording similar levels. Friday through Sunday only recorded two more crimes combined than Tuesday through Thursday. Given that this is a 12 month period, it could be argued the difference is negligible.

Levels within **2019** equally have no real pattern, with a Thursday recording the highest level. Levels are slightly increased across the weekend, with Friday through Sunday recording higher levels than Monday to Wednesday. Sunday has recorded an increase from two offences in 2018 to five offences in 2019, however again over a 12 month period an increase of three offences is negligible.

The data for 2020 and the first few months of 2021 is not representative of crime trends and issues due to COVID restrictions on movements and store closures.

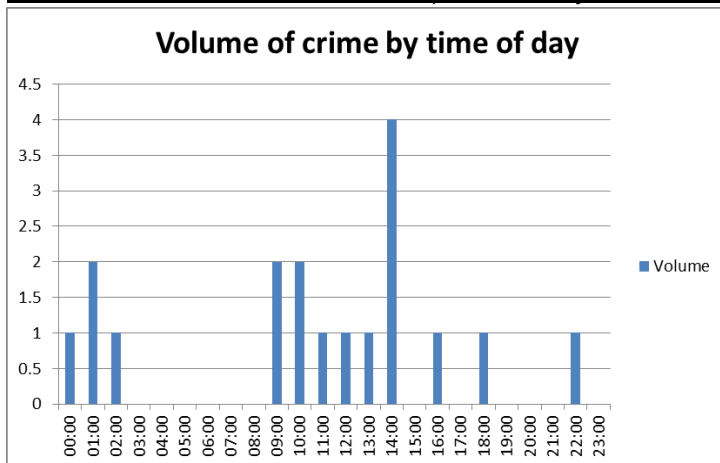
Although only 18 crimes have been reported between **June 2021 to December 2021**, the monthly average is comparable to 2018 and 2019, and in fact has seen a very slight increase in its percentage of overall crime in the Whitley bay sector from 0.7% to 0.8%. Friday through Sunday appear to be the quietest time with mid-week recording slightly higher levels, although with such a small volume of crimes over seven months, this should be read with caution.

June 2021 to December 2021 Aoristic Temporal Analysis of day of the week – (Park View)



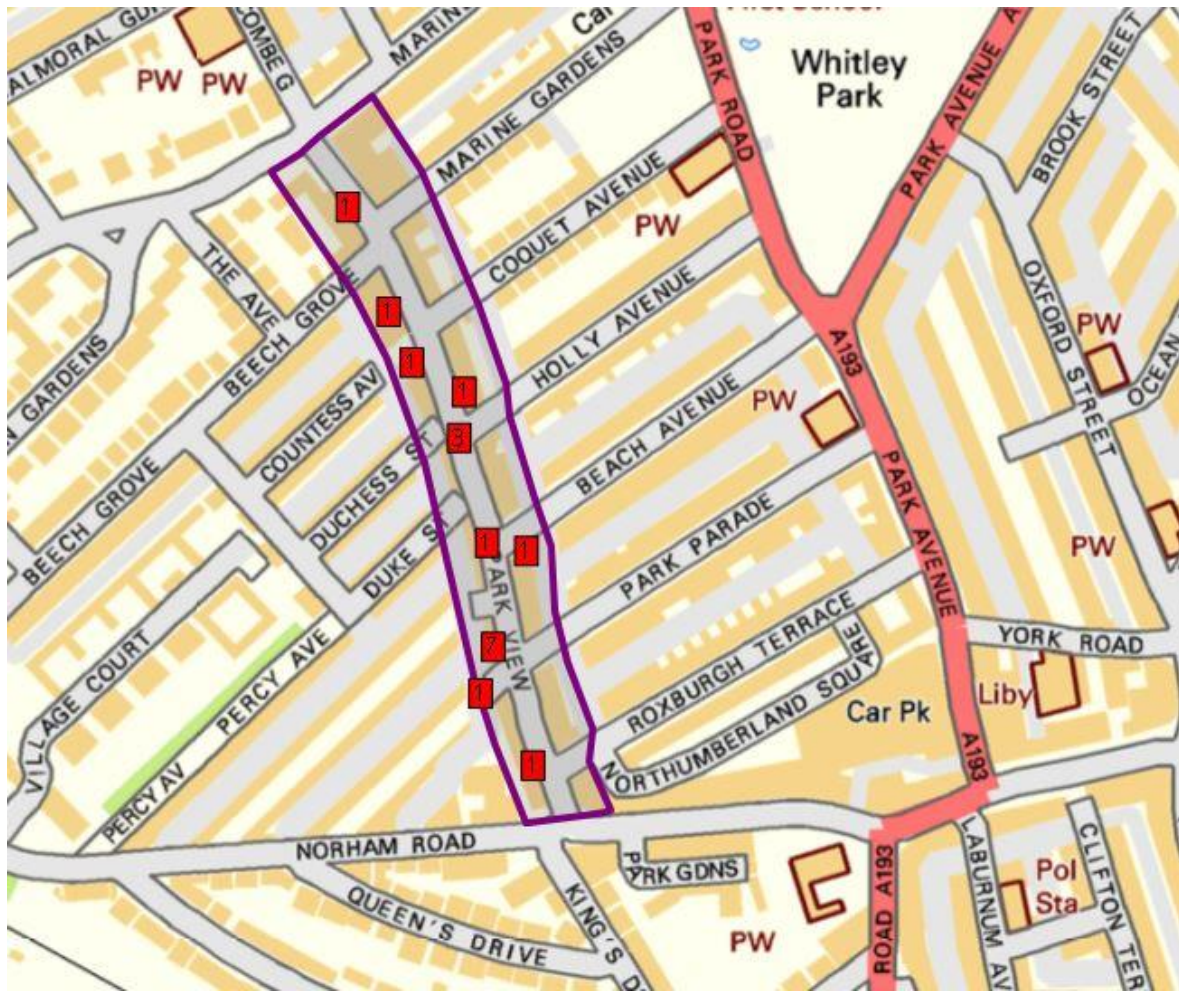
Most crime will be recorded with duration, over the periods of minutes, days and in some cases could have occurred over a period of weeks. As such further to the above table of days of the week, a weighted analysis has been conducted in relation to the days of the week in which offences may have occurred. From this analysis, Wednesdays have recorded the highest volume, however in terms of a seven month period, only three offences have been reported and as it shouldn't be viewed as a trend.

June 2021 and December 2021 (Time of day/Volume of crime.)



Although the volume of offences is low it is still possible to infer that offences mainly occur during main business hours between 09:00 and 14:00. There is very little activity in the late evening however four offences have been reported in the early hours between 00:00 and 02:00. This again however is over a seven month period and should be considered with caution.

All Crime levels for Park View June 2021 and December 2021 – Crime locations



### **Violent Crime - Park View;**

The data includes Violence against the person offences, ranging from Common Assault, Harassment and Malicious communication, injuries consistent with Section 47 and Public Order. The data does not differentiate between offences within private dwellings or public places.

Year	Total of Violence Crimes	Percentage of all Crime in Whitley Bay	Monthly Average
2018	9	0.2%	0.75
2019	4	0.1%	0.3
June 2021 and December 2021	7	0.3%	1

There are no days of note or hours of the day in terms of violence offences which were reported across a range of days and times with no real trend being identified.

### **Anti-Social - Park View;**

Anti-social behaviour (ASB) is recorded as an incident, which is a report made to Northumbria Police which is then logged and given an incident number. Each Incident is then provided a number of codes identifying the type of incident being reported. The data presented are incidents which received the coding identifying it as ASB.

Year	Number of ASB Incidents	Percentage of All Whitley Bay ASB	Monthly Average
2018	4	0.3%	0.3
2019	6	0.4%	0.5
June 2021 to December 2021	6	0.8%	0.9

During the period, June 2021 to December 2021 there has been six ASB incidents reported within the area of Parkview as outlined in the maps.

One incident is linked to COVID regulations and as such is not comparable with previous years and one incident relates to poor parking. Three of the six incidents relates to aggressive behaviour, including a report of a male grabbing their partner by the throat, a female refusing to leave a store, and several females exiting a restaurant whilst being loud and aggressive to each other. The remaining incident relates to "students" being loud and rowdy. All six incidents are reported on a Thursday, Friday and Sunday. There is no real pattern in terms of time of day, especially given such a small volume. Only one of the incidents can be suggested as involved with the Night Time Economy however this is only one incident over a seven month period.



## **Summary:**

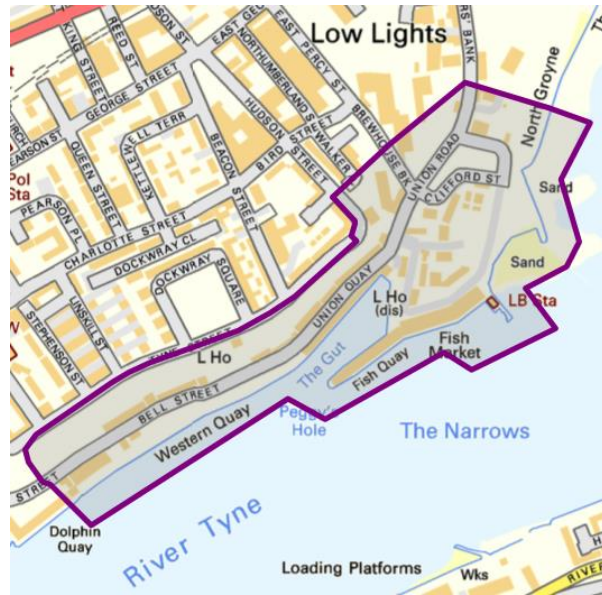
The area covered by the data relating to Park View is shown in the map above. As such Incidents and crimes not directly recorded on Park View has also been included. Despite this, volumes in terms of both Crimes and ASB incidents are very low with only 18 crimes being recorded between June 2021 and December 2021. This is a monthly average 2.6 which is slightly higher than the two years prior to COVID restrictions, with 2018 recording 2.4 and 2019 recording 2.3 but in reality indicates that only two crimes a month are reported. Due to the limited volume of data, analysis in terms of trends both in terms of daily levels and hour of the day levels is very problematic. However on viewing the actual details of the crimes and ASB incidents it could be argued that neither the Night Time Economy (NTE) nor licenced premises are having an impact on crime and ASB level. Violence is not a contributing issue in the area in terms of the overall crime levels, with in essence Shoplifting being the greatest crime generator.

Crime and ASB incidents in the Park View area account for less than 0.8% of all recorded crimes and incidents throughout all of Whitley bay. Given the small geographic area under review this is to be anticipated, however it does indicate there is no notable issue within the area.

Historical yearly trends for the Park View area show no real trend, which is expected due to the low annual volumes of crime and ASB incidents. Small variations can present themselves as notable changes in graph form and percentage changes.

**North Shields Fish Quay, the impact of crime in this area.**

**North Shields Fish Quay**



**All recorded crime within the Fish Quay:**

Year	Total Number of Crimes	Percentage of Crime in North Shields	Monthly average
2018	38	0.5%	3.2
2019	35	0.5%	2.9
June 2021 to December 2021	17	0.6%	2.4

**Crime levels for the Fish Quay Area by day of the week**

	2018	2019	2021
Monday	7	4	1
Tuesday	3	3	4
Wednesday	8	5	2
Thursday	6	1	1
Friday	3	7	5
Saturday	7	9	2
Sunday	4	6	2

The overall crime levels for the area are low, with total crime for a 12 month period being 35 for 2019. The low volume does make temporal analysis limited in its reliability.

In 2018 there is no indication of a particular trend in terms of offences on particular days of the week. Certainly there is nothing to indicate that weekends are particularly of interest.

Levels in 2019, demonstrate a clearer pattern with Friday through Sundays being peak days.

In the seven months between June 2021 and December 2021, 17 crimes have been recorded, which makes it difficult to identify any trends however, it could be suggested that Tuesday and Friday have recorded the peak volumes, but offences do occur over the range of the week.

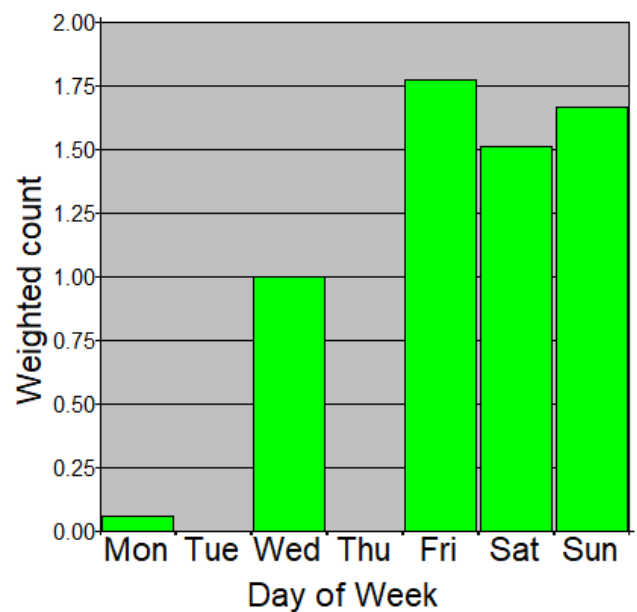
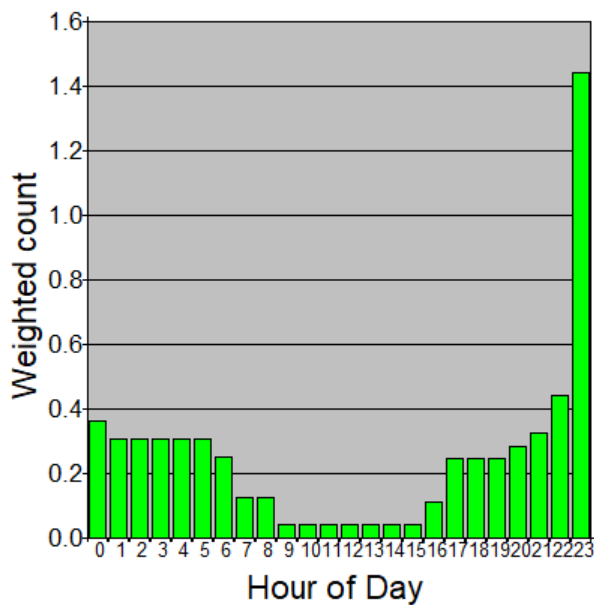
2021 Aoristic Temporal Analysis of day of the week – (Fish Quay)

Most crime will be recorded with duration, over the periods of minutes, days and in some cases could have occurred over a period of weeks. As such further to the above table of days of the week, a weighted analysis has been conducted in relation to the days of the week in which offences may have occurred.

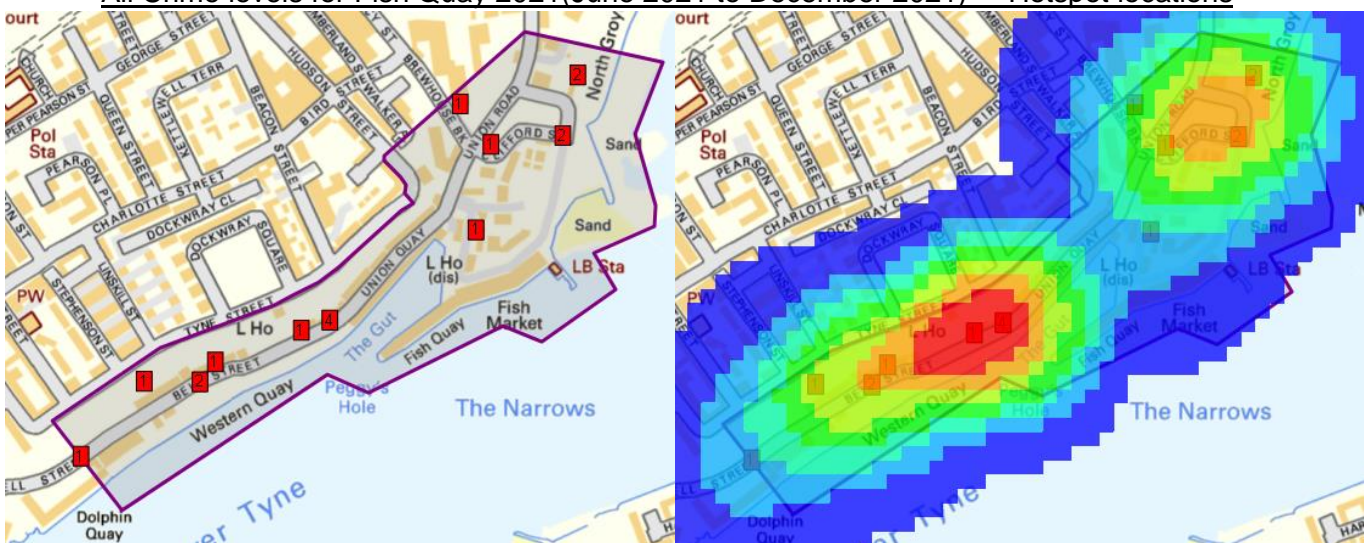
The Aoristic analysis indicates that Friday, through Sundays are the peak period of the week in terms of all crime. 53% of all crime in the Fish Quay Area occurs between a Friday and Sunday.

The weighted average specifically for Friday through Sunday indicates that levels begin to increase around 16:00 peaking before midnight. Residual levels are recorded in the early hours which are likely to be offences which are discovered in the morning but could have occurred at any time over night.

Crime levels for Fish Quay Area by hours of the day



All Crime levels for Fish Quay 2021(June 2021 to December 2021) – Hotspot locations





### All Crime levels for Fish Quay Area 2019 – Hotspot locations



### Violent Crime within the Fish Quay area;

There has been only two reports of violence against the person offences during the seven month period, a sexual assault of touching and a malicious communications. The data does not differentiate between offences within private dwellings or public places; however neither of these offences are domestic in nature. This would place the area well below the 0.1% of violence for all of the North Shields area.

Year	Total Number of Crimes	Percentage of Crime in North Shields
2018	14	0.2%
2019	8	0.1%

Similarly there have only been four public order crimes recorded over the seven month period, all occurring between 12:00 to 15:00.

### Anti-Social Behaviour within the Fish Quay area;

Anti-social behaviour (ASB) is recorded as an incident, which is a report made to Northumbria Police which is then logged and given an incident number. Each Incident is then provided a number of codes identifying the type of incident being reported. The data presented are incidents which received the coding identifying it as ASB.

Between June 2021 and December 2021, 12 incidents of ASB have been reported.

Years	Number of ASB Incidents	Percentage of ALL North Shields ASB	Monthly Average
2018	12	0.60%	1
2019	11	0.60%	0.9
June 2021 and December 2021	12	1.30%	1.7

ASB levels within the Fish Quay Area are particularly low with 12 incidents over a seven month period.

In reality only three of the 12 incidents could be linked to the Night Time Economy or public houses. An incident was reported by staff at the Ships Cat, at 19:36 on a Sunday in which they have asked a group of males to leave due to believed drug use. One male has remained in the Foyer in a calm manner but would not move on. An incident has been recorded at the Brewhouse at 22:59 on a Monday night in which one male has made threats

to hurt individuals within. The male has exited however a call was made due to concerns he may re-enter, which he didn't. The remaining potential NTE incident was reported on Union Quay in which 10 males and four females were acting aggressively at 01:21 on a Saturday Morning, however there was nothing to indicate they were intoxicated or the reason for their aggression.

Of the remaining nine incidents, two relate to COVID breaches, two relate to youths entering derelict building, two relate to drunk males fishing off the Quay. One report was made of motorcycle disorder and one report was made of Jet-ski miss use in the river. The remaining incident refers to a police road traffic stop.

Given the mixed nature of the incident types, and that there is on average less than two reports made on a monthly basis it is difficult to identify any areas of concern and in fact the reports made by licenced premises appears to show appropriate action is taken if drug use or aggression is used.

There is no particular day of the week of note although it could be suggested that Wednesday and Thursdays appear to be the quietist but levels of incident reporting certainly do not see any increase over the weekends.

#### Summary;

The area of North Shields Fish Quay, is around 0.8% of the square miles of D1 (North Shields) Police sector. The all crime levels are 0.6% of the overall crime for the same sector, which indicates a low concentration of crime. It must be noted however that this is not a dense residential area, but being a scenic coastal area it does draw visitors.

Of the 17 crimes recorded in the area, between June 2021 and December 2021, 12% (two crimes) are recorded as violence offences, although one is recorded as a Malicious communication which could have originated anywhere. One of the assaults in the area is reported at licenced premises which was a sexual touching by a male under the influence of alcohol.

In terms of ASB in this area, the levels are particularly low for the seven month period and there is very little to indicate any impact caused by licenced premises. There has been no directed ASB and every incident appears to be unrelated and spread evenly over a wide time frame.