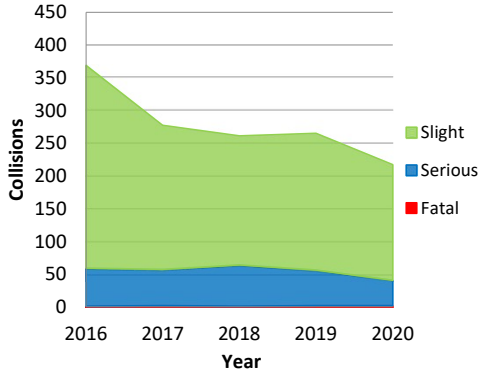


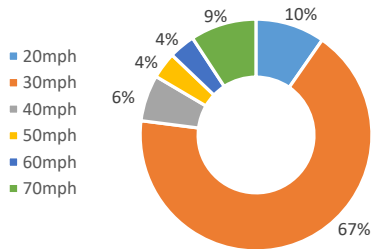
**Road Safety**

Collisions by Year and Severity 2016 - 2020

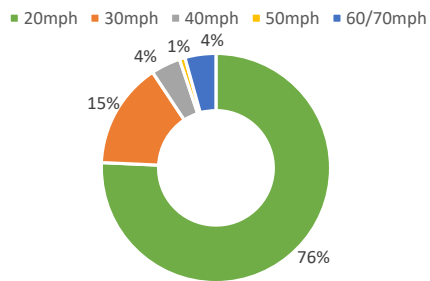


17% reduction in all collisions 2017-19 to 2020

Proportion of Collisions by Speed Limit 2020



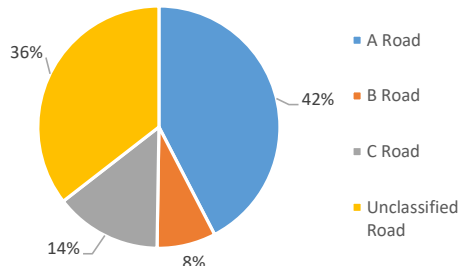
Speed Limits in North Tyneside



There are 5 Cluster Sites in North Tyneside within the 3 year period 2018 - 2020

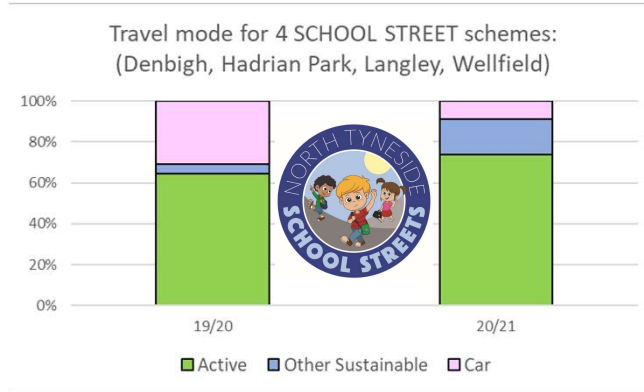
A Cluster Site is defined by more than 5 Collisions within a 50m radius

Collisions by Road Type 2020



**Sustainable Travel**

Latest surveys show 66% of total school journeys are by sustainable modes, with a future target of 75%. For 2020/21 academic year outside of Covid-19 school closures



**Training**

Engaged with:

- 632 school pupils through Go Smarter;
- 651 received Bikeability Training; and
- 573 received Road Safety Training.

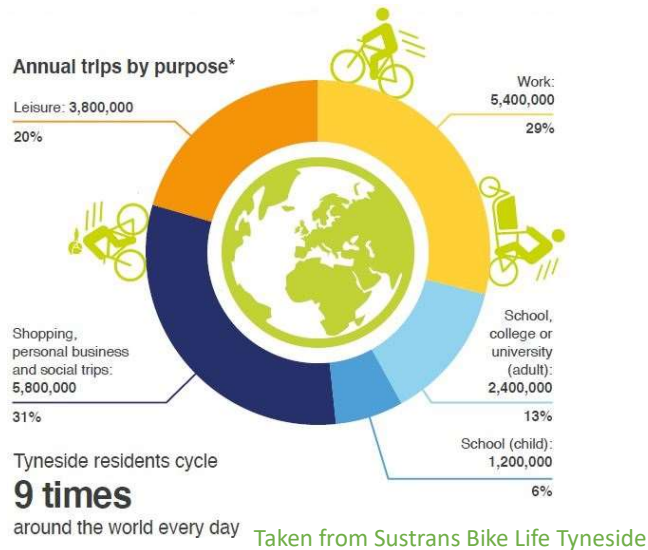


**Cycling**

13 Schemes delivering approx. 8.1km new / upgraded infrastructure.

Sustained cycling growth in North Tyneside of 59% from 2019 to 2020 with 32% growth in Tyne & Wear for same period.

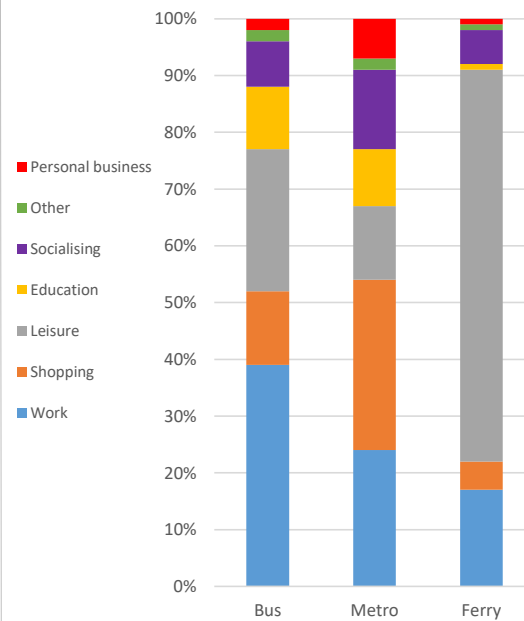
**Sustrans Regional Cycling Behaviour Survey:**



Note: The annual report covers the period 1 April 2020 to 31 March 2021, hence the data presented here is impacted by the government restrictions associated with the Covid-19 pandemic

**Travel Trends**

Journey Purpose in Tyne & Wear 2019/20



**Investment**

Continued investment in Major Schemes with 2 schemes delivered this year which includes schemes with elements of developer funded works.

Full or partial road resurfacing equivalent to 9.25 miles of road carried out in 2020/21.

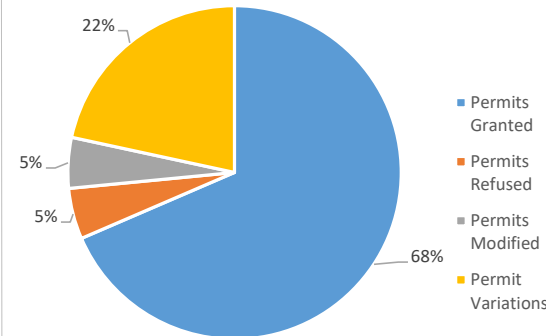
50 footway improvements delivered in 2020/21.

In 2020/21 there were 28 parking improvement schemes delivered (e.g. double yellow lines etc.) and 19 advisory disabled bays.

There were 14 Road Safety Schemes, 3 Public Transport Schemes and 6 Sustainable Travel Schemes installed in 2020/21.

**Network Management**

Streetworks Permits 2020/21



**Public Transport**

151,486 trips on the Ferry in 2020/21.

Approx. 6 million miles of bus journeys within North Tyneside in 2019/20 (pre Covid-19).

Approx. 9.388 million trips on the Metro Network in 2020/21.

37% of North Tyneside is within 800m of a Metro Station

840 Taxis (hackney carriages & private hire vehicles) Registered in North Tyneside

127 locations covered by driver speed feedback sign programme.

3 journey time monitoring corridors with a further 8 to follow.