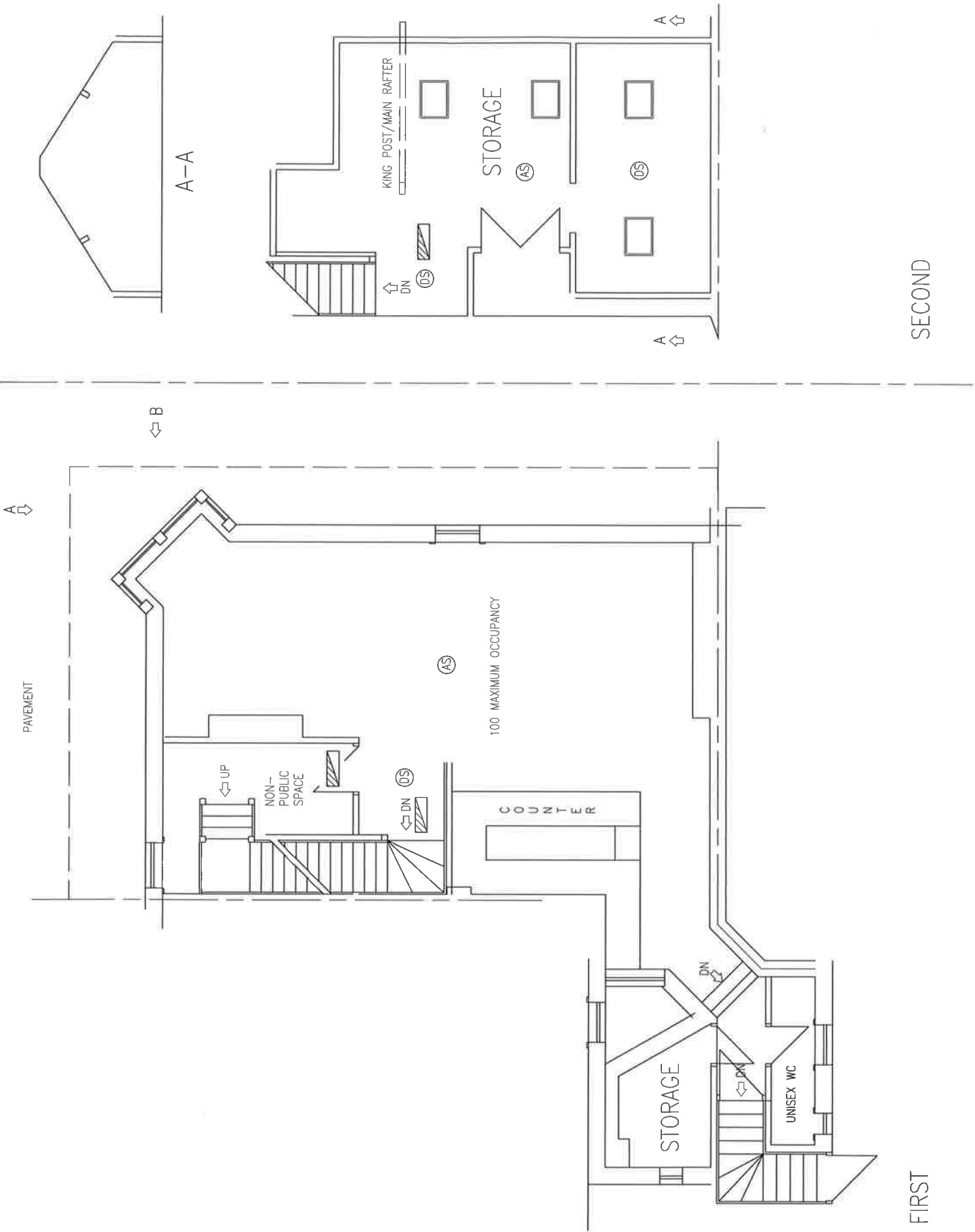


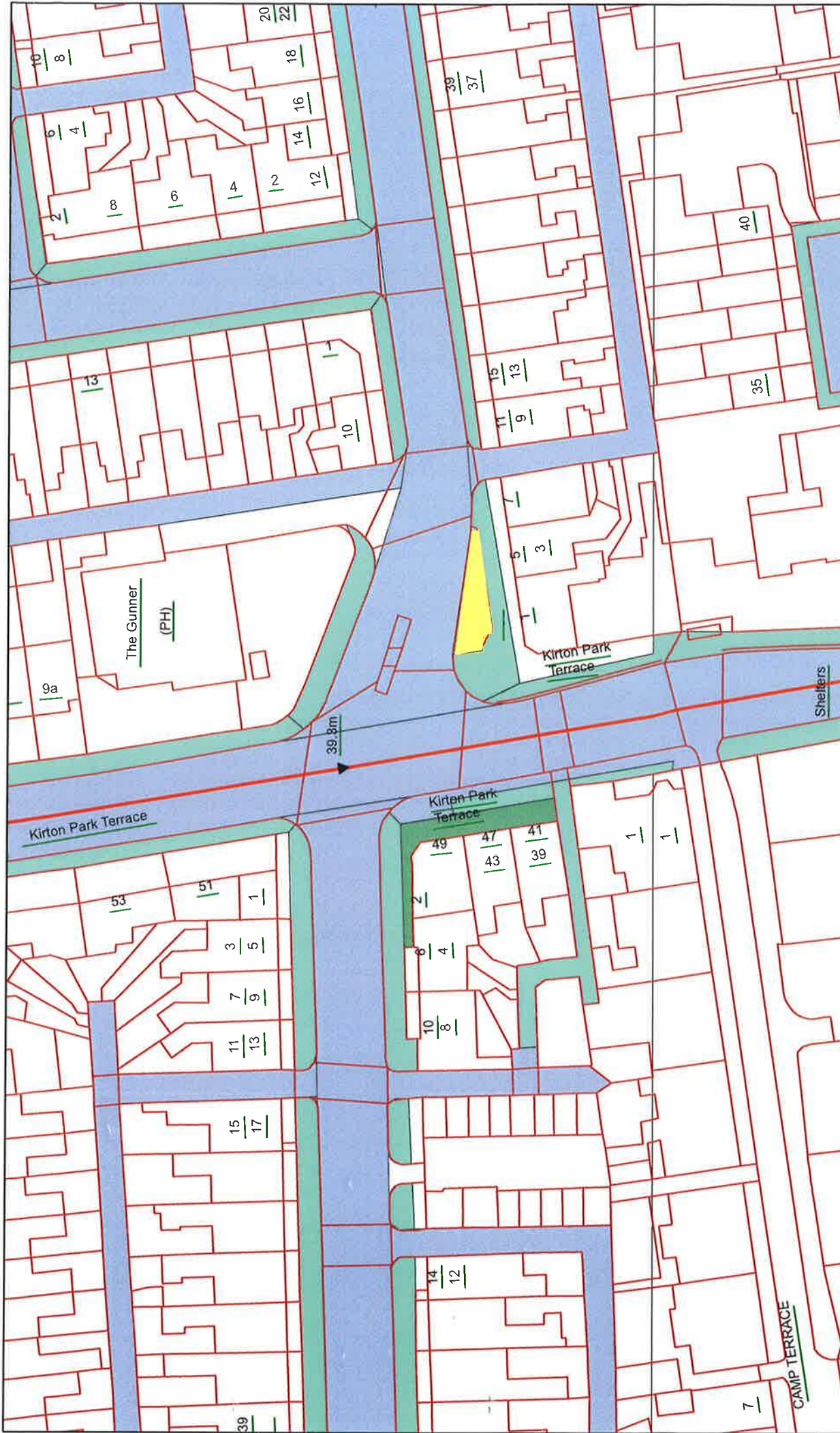
## **APPENDIX 2**





FIRST

SECOND



Trevor Terrace

North Tyneside Council  
 Development Directorate  
 Quadrant, The Silverlink North  
 Cobalt Business Park  
 NE27 0BY



North Tyneside Council

This map is reproduced from Ordnance Survey material with the permission of Ordnance Survey on behalf of the Controller of Her Majesty's Stationary Office. Crown Copyright. Unauthorised reproduction infringes crown copyright and may lead to prosecution of civil proceedings. North Tyneside Council LA 076252 2003. 100016801.