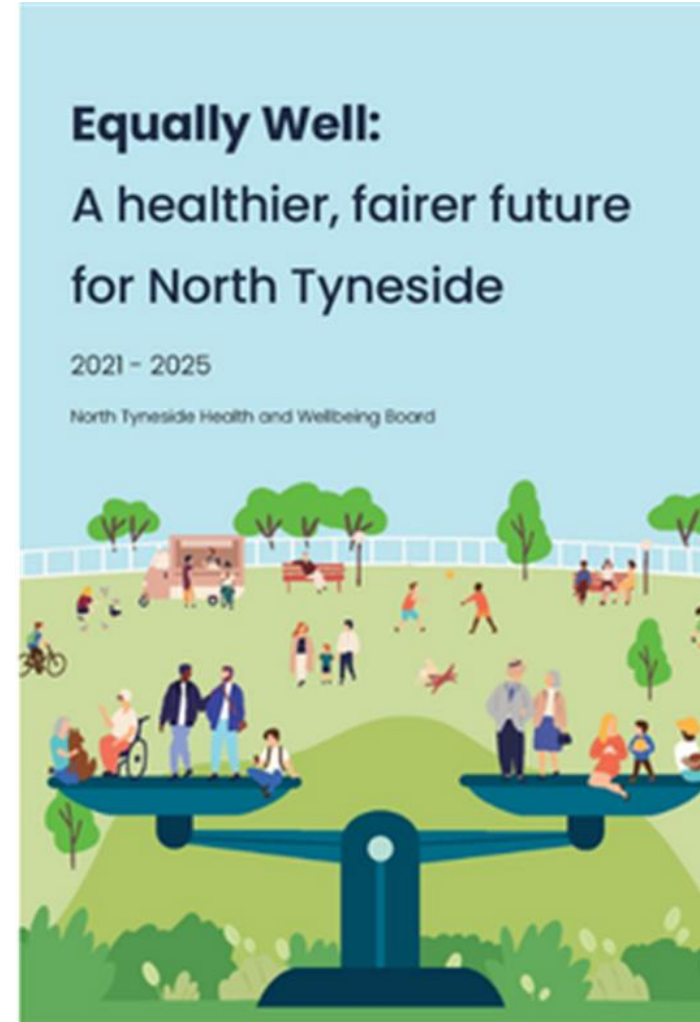


North Tyneside Family Hubs

Best start in life

Kirsty McLanders
Public Health Manager
Health and Wellbeing Board – November 2022



What are Family Hubs?

A Family Hub is a **system-wide model** of providing high-quality, whole-family, joined up, family support services. Family Hubs deliver these family support services **from pregnancy, through the child's early years and later childhood, and into early adulthood** until they reach the age of 19 (or up to 25 for young people with special educational needs and disabilities).

Our North Tyneside Family Hub Model will support two key impact areas of Equally Well

- Giving every child the best start in life
- Enabling all children, young people, and adults to maximise their capabilities and have control over their lives

Equally Well:
A healthier, fairer future
for North Tyneside

2021 - 2025

North Tyneside Health and Wellbeing Board



Family Hub Expectations : fully operational 2024/25

Family Hubs should provide:

- **Join-up of local partners** involved in the early years and family support system – including local authorities, NHS, safeguarding, voluntary, community, faith and charity sector partners
- **Strong local leadership and a commitment** across partners to prioritise the early years, and support families with children of all ages.
- A **skilled workforce** working in integrated ways to provide families with universal and targeted support.
- Continuity of care between professionals and peer supporters, facilitated by the appropriate person for the family, to ensure **families receive a seamless offer of support** and do not have to repeat their story.
- **Consultation with families**, including young people, parents, and carers, to co-design and improve services.
- Ensure **safeguarding** underpins all aspects of Start for Life and family services delivered through family hubs, as set out in 'Working Together to Safeguard Children'.
- Provide high quality and **evidence-based support**.

WE LISTEN | WE CARE | WE ARE AMBITIOUS | WE ARE GOOD VALUE FOR MONEY



North Tyneside Council

Family Hub Expectations : fully operational 2024/25

National Government guidance also advises:

- **Health and social care integration: joining up care for people, places and populations.** Local areas should ensure that system-wide planning takes place so that all programmes and services in an Integrated Care System (ICS) area are working towards shared outcomes for families.
- **Building on other programmes and investments**



Family Hubs in North Tyneside

North Tyneside's former Children's Centres are operating as Family Hubs

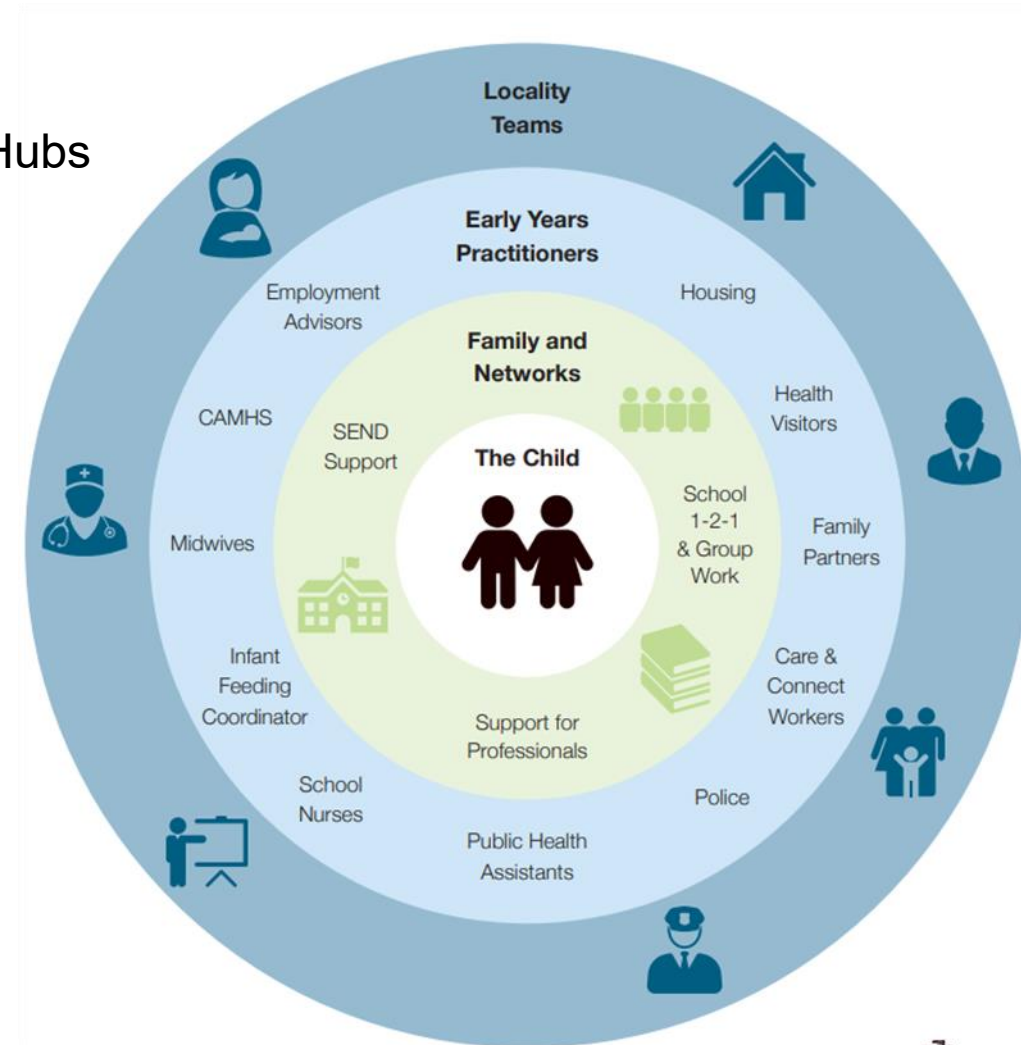
- Riverside
- Shiremoor
- Howdon

Future offer needs to be developed and strengthened to ensure the following principles are incorporated:

- Must be accessible
- Connected to other local support
- More relationship-centred

Services should be available:

- Face to face
- Virtually
- Via outreach



Building on existing practice across the system

Early Help Offer

- Review of EH Offer
- Supporting Families team launched
- Whole Family working introduced
- Launch of EH Assessment
- Impower work & Evaluation

2013 - 2017

Early Help & Schools

- Troubled Families
- Locality Teams / Family Hubs
- Keeping Children in School
- Schools mental health and wellbeing
- 0-19 teams

Initiatives

- PHE 'Bottled Up' pilot
- Development of RFS model
- Project Vita
- Review and relaunch of EHA
- Government Manifesto – Troubled Families
- Young Carers

Practice and System Implementation

- Signs of Safety implementation
- New case management system
- Quality of practice focus
- Defined focus on Early Help
- Barnardo's Strategic Alliance

2018 - 2019

New Front Door Model

- Multi-Agency Safeguarding Hub
- Partnership commitment
- New Beginnings transferred in
- CAMHS Pathway established

Development of EH Offer

- Bottled up jointly commissioned
- Digital parent offer developed
- Launched EH Strategy
- Working with Anna Freud
- Mental Health Partnership – Early Help in CAMHS

2020 - 2022

Continuous Improvement

- DfE Family Hubs self assessment
- Reducing Parental Conflict
- Development of SEND EH Hub
- NHS Early Help into PCN
- VCSE partnership working



Next steps and considerations

- ✓ **Self assess** North Tyneside's current Family Hub offer against national guidance
- ✓ **Local Needs Assessment** to bring together data held across partners
- ✓ **Stakeholder engagement** to establish clear vision for the hubs and common goals
- ✓ Working with communities to **level up inequalities** and bridge the gaps caused by rise in cost of living and poverty
- ✓ Further focus on **capturing the voice and views of children and families** on the quality and impact of the help they receive
- ✓ **Further refinement of the local model** and develop project plan
- ✓ **Rebranding and publicising the offer** in North Tyneside hubs – linking with new supporting families framework
- ✓ Ensure all **minimum expectations from the national guidance** are met by the end of the three-year programme – end of 2024/25

